

Implen OD600® Technical Specifications



Optical Specifications & Displayed Information		
Wavelength	600 nm	
Photometric Range	OD600: 0 – 4 A	McFarland: 0 – 16 MFU
Accuracy	OD600: @ 1 A: < ±0.01 A	McFarland: @ 0 – 8 MFU: ≤ ±0.1 MFU
Reproducibility	OD600: @ 1 A: < ±0.002 A	McFarland: @ 0 – 8 MFU: ≤ ±0.05 MFU
Cuvettes/Tubes	DiluCells, 10 mm macro and semi-micro cuvettes; 10, 12, 16, 18 mm glass/falcon tubes – without the need for adapters. Washable sample compartment - fixed with drain hole.	
Optical Height	8.5 mm	
Displayed Information	Sample list function: View sample data onboard including Abs value, MFU value, sample name, time and date of measurement	

General Specifications		
Instrument Size	140 (L) x 110 (W) x 70 (H) mm	
Weight	0.6 kg	
Display Size	3.5" glove compatible touchscreen, 480 x 320 pixels	
Memory	4 GB internal memory, access to all previously measured sample data in sample list feature	
Time and Date Data	Manual or automatic time setting	
Connection Capability/Output	Data export via USB A port Charging via USB C port	LIMS integration via WiFi, Ethernet/LAN (Rest API PUSH)
Battery Life	Rechargeable, continuous use for ~8 hours	
Certification	CE, IEC61010-1:2012 and EN 61326-1:2013	
Data Format	.xls and .csv format exportable. For LIMS: JSON	

DiluCell™ Optical & General Specifications			
Dimensions	12 mm x 12 mm x 45 mm	Automatic Dilution	Factor 10 (1:10)
Pathlength	1 mm (identifiable by special marking)	Volume	300 µl required sample volume
UV/VIS Transparent	Starting from 340 nm		

Ordering Information

Article No.	Description
Implen OD600®-EU	Implen OD600®-EU Includes: OD600 Instrument, USB-C cable, EU power supply , and Quick Start Guide
Implen OD600®-US	Implen OD600®-US Includes: OD600 Instrument, USB-C cable, US power supply , and Quick Start Guide
Implen OD600®-UK	Implen OD600®-UK Includes: OD600 Instrument, USB-C cable, UK power supply , and Quick Start Guide
Implen OD600®-CN	Implen OD600®-CN Includes: OD600 Instrument, USB-C cable, CN power supply , and Quick Start Guide
DC 10	DiluCell™ 10 Disposable cuvette with 1/10 virtual dilution, Pack of 96
OD600-Q	IQ/OQ Documentation package for the Implen OD600®

Features and specifications are subject to change without notice.

Implen OD600®

Fast, easy, and accurate determination of cell density at 600 nm



Made in Germany



Implen GmbH
ISO 9001:2015



Europe, Asia, South Pacific,
Middle East and Africa

Implen GmbH
Schatzbogen 52
81829 München, Germany
Phone: +49 89 72637180
Fax: +49 89 726371854
Email: info@implen.de
Website: www.implen.de

North and South
America

Implen, Inc.
31194 La Baya Drive, Unit 104
Westlake Village, CA 91362, USA
Phone: +1 818 748-6400
Fax: +1 818 449-0416
Email: info@implen.com
Website: www.implen.com



Implen OD600®

- Modern, stand-alone, battery powered device with direct operation via the touchscreen display
- Designed with simplicity in mind, the OD600 features an intuitive interface for easy operation
- Fast and easy determination of cell density at 600 nm
- Measure OD600 values up to 4 A



UTMOST COMPATIBILITY WITHOUT ADAPTERS

- DiluCell™
- All commercial cuvettes
- Reagent tubes – 10, 12, 16 and 18 mm; no height restriction
- Washable sample compartment



STAND-ALONE OPERATION

- Integrated battery with a runtime of > 8 h (continuous use)
- Unlimited mobility, suitable for use in field work, safety cabinets, and also in incubation chambers even under anaerobic conditions*



ADVANCED CONNECTIVITY OPTIONS

- Data export to USB – .xls and .csv formats
- LIMS integration via WiFi, LAN/Ethernet (REST API PUSH)



DATA STORAGE & UNIVERSAL CAPABILITIES

- 4 GB storage capacity
- Software is available in 6 languages – English, Chinese, Japanese, German, Spanish, and French



MAINTENANCE FREE SETUP

- No moving parts, no recalibration necessary



Easy-to-clean, smooth glass surface

Ideal for usage in laminar flow or biosafety hoods

Touchscreen display
3.5" glove-compatible touchscreen

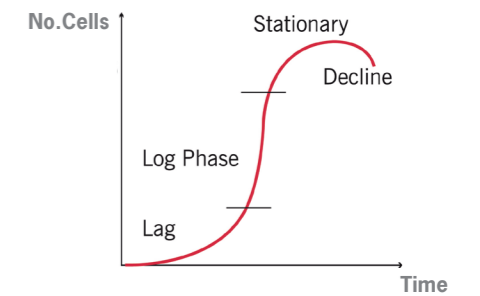
USB-A port
Fast data export in .xls and .csv file formats

Ambient LED light strip
Pulsates while charging

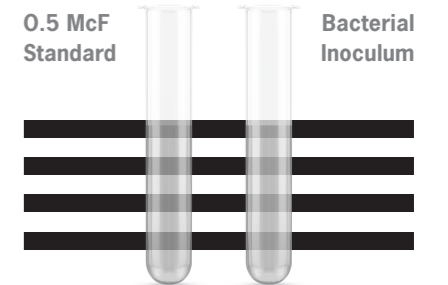
The device is preprogrammed with intuitive OD600 and McFarland applications



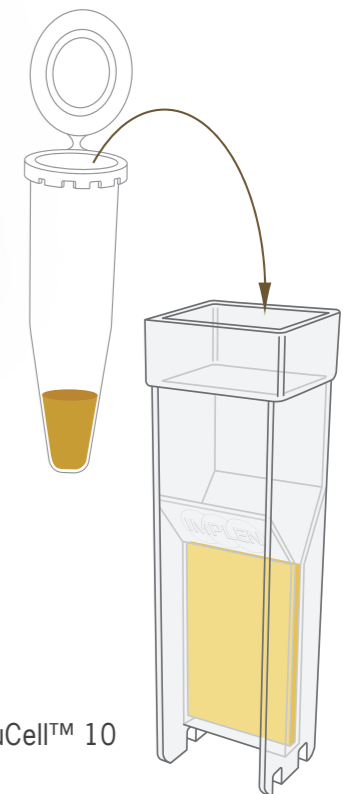
OD600 Application



McFarland Application



GMP/GLP ready with DiluCell™
Small volume requirement 300 µl
Automatic sample dilution of factor 10



DiluCell™ 10

*Certain restrictions or limitations apply. Please contact Support.